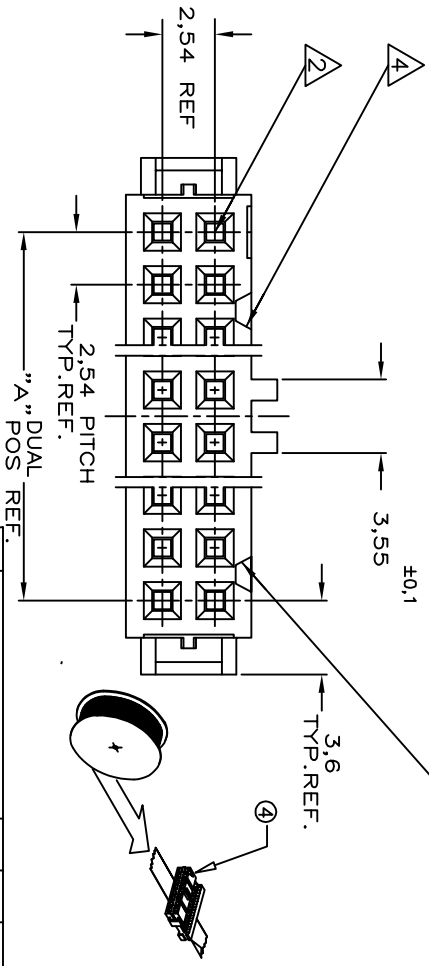
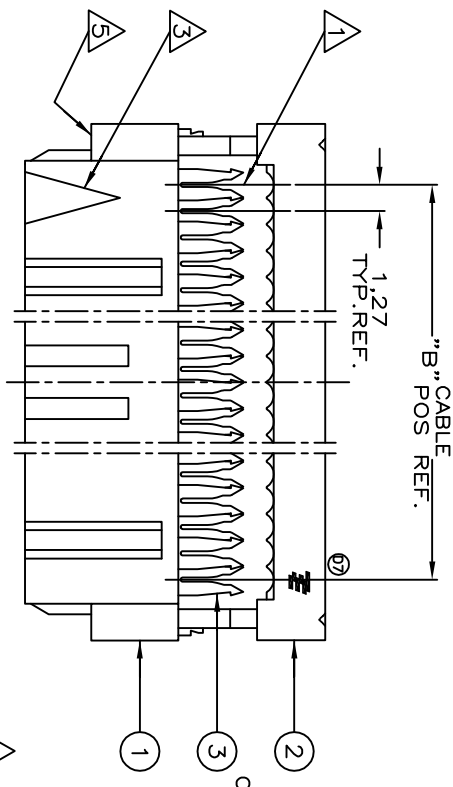
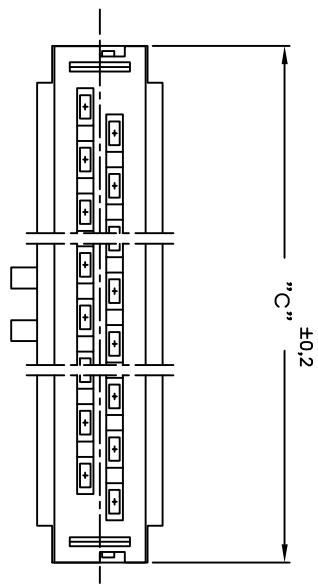


DO NOT SCALE
DIMENSIONS IN mm

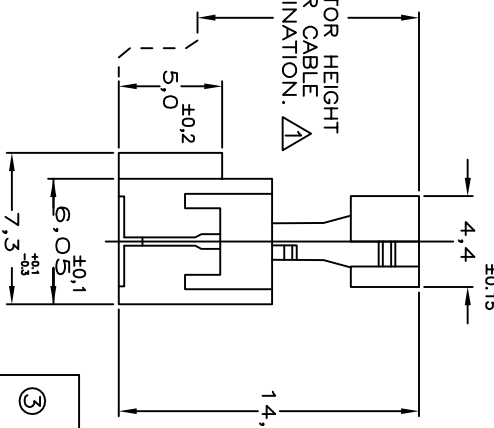
METRIC

THIRD ANGLE
PROJECTION



NOTES:

- 1 CONNECTOR IS DESIGNED FOR FLAT RIBBON CABLE ON 1,27 CENTERS . FOR CABLE REQUIREMENTS SEE AMP APPLICATION SPECIFICATION 114-19022.
- 2 THESE RECEPTACLE CONNECTORS MATE WITH 0.64^{+0.05} mm SQUARE OR ROUND POSTS ON 2.54mm GRID.
- 3 MARK INDICATING FIRST CABLE POSITION REFERRING TO CONTACT POSITION.
- 4 THERE IS NO POLARIZATION-SLOT AT THIS END IN 6, 10 AND 14 POS CONNECTORS.
- 5 THESE CONNECTORS CAN BE USED IN CONJUNCTION WITH STRAIN-RELIEF COVERS OF PARTNR: 100103.
- 6 THERE IS NO POLARIZATION-SLOT AT THIS END IN 6 POS CONNECTORS.
- 7 PRODUCT SPECIFICATION 108-19033.
- 8 OBSOLETE PARTS: OBSOLETE CIS STREAMLINING PER DRENAUD/D.SINISI



QTY PER REEL	DIM. "C"	"B" CABLE POS.	"A" DUAL POS.	PARTNUMBER	PART REV.
1000	85.9	64	32	6-215915-4	D
1000	80.8	60	30	6-215915-0	D
1000	68.1	50	25	5-215915-0	D
1500	60.5	44	22	4-215915-4	D
1500	55.4	40	20	4-215915-0	D
1500	47.8	34	17	3-215915-4	D
1500	42.7	30	15	3-215915-0	D
1500	37.6	26	13	2-215915-6	D
1500	30.0	20	10	2-215915-0	D
1500	24.9	16	8	1-215915-6	D
1500	22.4	14	7	1-215915-4	D
1500	17.3	10	5	1-215915-0	D
OBSOLETE	14.6	6	4	0-215915-6	B
OBSOLETE	12.2	6	3	0-215915-6	B
OBSOLETE	9.7	4	2	0-215915-4	B

COMPONENT NAME	MATERIAL	PLATING / COLOUR
3 RECEPTACLE CONTACT	PHOSPHORBRONZE Cu Sn6	AT CONTACT-PLACE: 0.8µm GOLD AT WIRING END: 2.5µm TIN ENTIRE UNDERCOATING: 1,27µm NICKEL
2 COVER	THERMOPLASTIC POLYESTER GF UL 94 -V0	GREY RAL 7032 ONLY FOR REF.
1 HOUSING		

REV.	DATE	BY	CHK.	DESCRIPTION
D6	09-02-09	31AUC09	KK	ECO-09-020935
D5	06-09-06	29576	AV.	ECR06-29576
D4	04-03-04	0243-04	AV.	ET00-0243-04
D3	04-07-04	0159-04	AV.	ET00-0159-04
D2	04-01-04	0180-03	AV.	ET00-0180-03
D1	03-03-03	0093-03	SS	ET00-0093-03
D	82-07-82	7482	JWL	H-7482

REV.	DATE	BY	CHK.	DESCRIPTION
D7	08-02-08	21-12-10	L.SM	ECR-10-026086